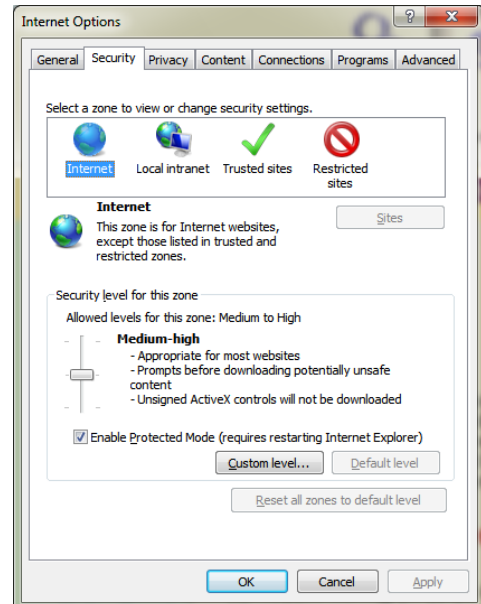


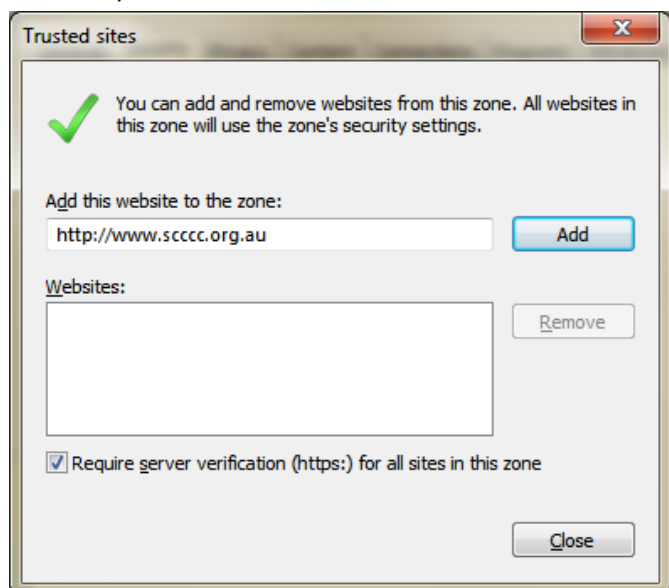
## **HELPFUL HINT 1.**

### **How to Open the Members Page using Microsoft Internet Explorer, Version 8**

1. Open the home page of the clubs website, [www.scccc.org.au](http://www.scccc.org.au)
2. Open the Tools menu.
3. Select Internet Options.
4. Choose the Security tab of the Internet Options dialog box that opens (see diagram below).



5. Click on the Trusted Sites green tick then the **Sites** button.
6. The Trusted Sites dialog box should open (see below)



7. Remove the tick beside "Require server ..." by clicking on the
8. Now click on the **Add** button; this will "Add this website to the zone"
9. Use the **Close** button to shut this dialog box the **OK** on the Internet Options dialog box (above)
10. Retry using the password (see Beverley)